



Meridian Solar Farm

EN010169

Volume 6

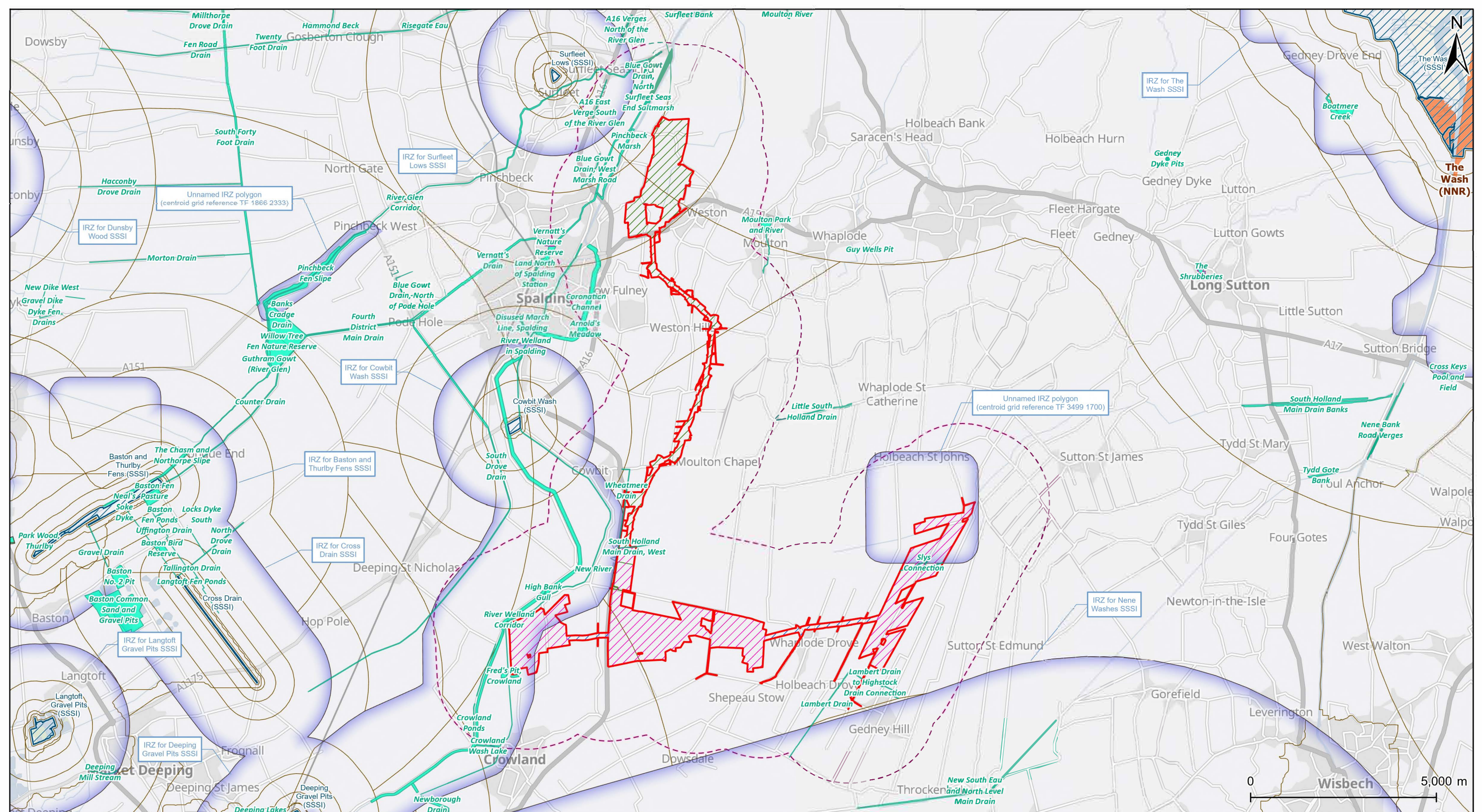
Environmental Statement

6.2 ES Figure 9-2:
Nationally Designated and
Non-Statutory Sites within
2km

APFP Regulation 5(2)(a)

Infrastructure Planning (Applications:
Prescribed Forms and Procedure)
Regulations 2009

March 2026



Project Title			
Meridian Solar Farm			
Map Title			
Environmental Statement Figure 9-2: Nationally designated and non-statutory sites within 2km			
Scale @ A3	Version	Drawn	Reviewed
1:95,000	0	JM	JET


Legend

- Order Limits
- Order Limits - 2km buffer
- Solar Development Areas
- Inter-Array Connections
- Grid Connection Route
- Local Wildlife Sites
- National Nature Reserves (NNR)
- Site of Special Scientific Interest
- SSSI Impact Risk Zones (IRZ)*
- SSSI Impact Risk Zones (IRZ) - all features
- Local Nature Reserve (LNR)**
- Ancient Woodland**

*IRZ features have been filtered based on the development type
 **Layer displayed on map but no features present within map frame

Date: 20/03/2026

Copyright
 Contains OS data © Crown copyright and database right 2026.
 Contains data from OS Zoomstack.
 Reproduced from Ordnance Survey digital map data © Crown copyright 2025.
 All rights reserved. Licence number AC0000808122.
 © Greater Lincolnshire Nature Partnership.
 Contains public sector information licensed under the Open Government Licence v3.0.




0 10 km
Peterborough